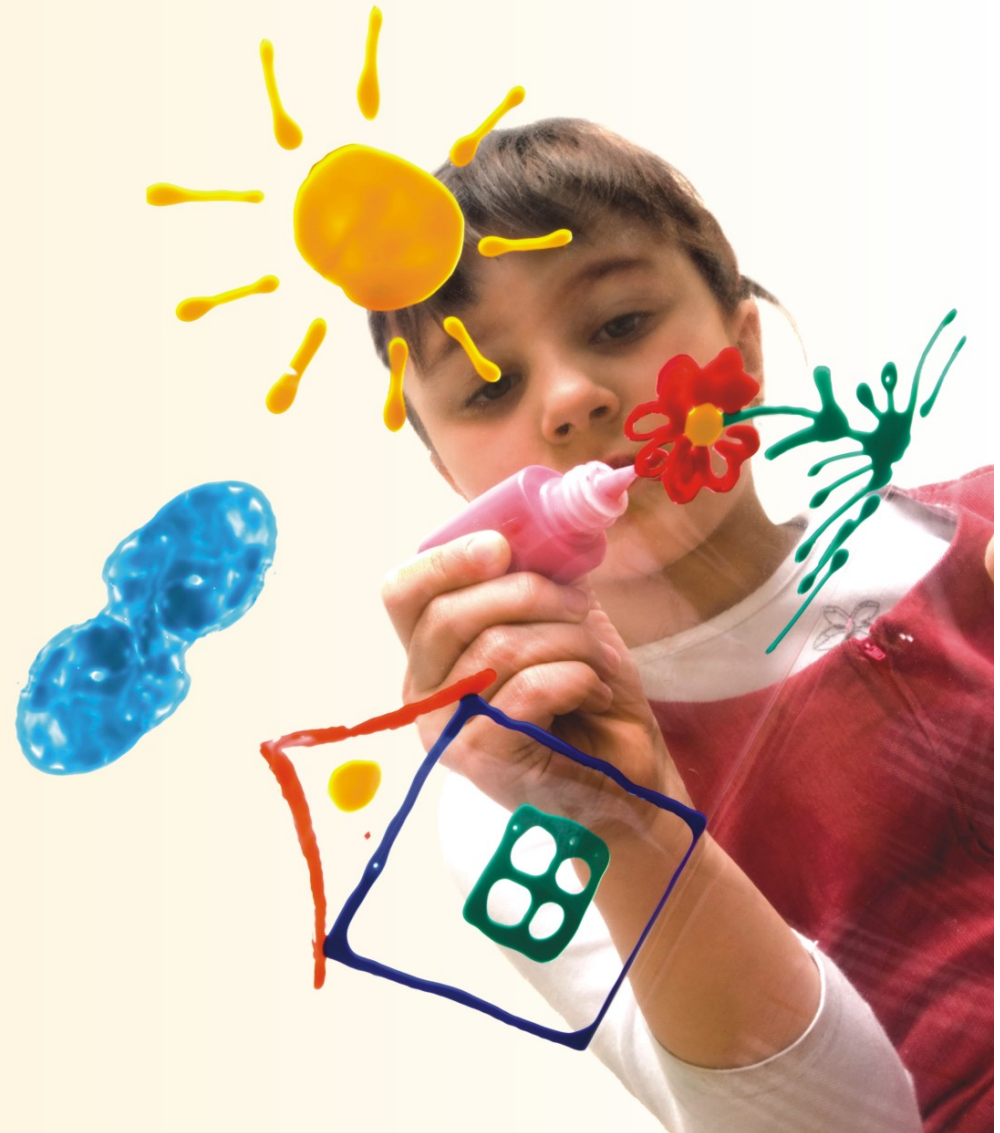


Your world
your inspiration!



SAI
KRISHNA
RESIDENCY

Just a
thought
away...

Sai Krishna Residency
is **Safal Construction's**
tribute to your lifestyle. Book
a Flat or watch your dream
villa take shape before your
eyes. Either way you have a
winning investment and a
gateway from the cluster of
the city.

Sai Krishna Residency is
brought to you by leading real
estate developers who have
set new trends in creating
world-class townships and
commercial space in prime
locations of Bhubaneswar.

Just a
decision
away...

Your home, your space,
your moment... it's just
one decision away.
Escape to a world that
encapsulates your
aspirations, translates
your dreams and realizes
your desire.

“WOW”

You'll exclaim, when you come to Sai Krishna Residency. Truly, your gateway to the high life at the most sought after locate of Bhubaneswar.

Here lies an experience that touches the core of your heart. Very open. Very spacious. Very special.

For connoisseurs of life, here's the place to belong. It's here “that class meets class.”



SAI KRISHNA RESIDENCY



Amenities

- Lush Green Env.
- Children's Park
- Modern Gym
- Jogging Track
- Huge open space
- High rise compound wall prevents all kind of tres pass.
- Gated community with round the clock security
- Bore wells with 24 hrs. Water supply
- Double Lift in each Block
- Car Parking Facilities
- Power backup Generator facilities
- Community Hall
- Temple
- Market Complex (6 Storeyed)
- Basket Ball Court
- Badminton Court
- Swimming Pool



amenities



Specification

STRUCTURE:

Earthquake Resistant R.C.C. Frame

FLOORING:

Floor Tiles in Drawing / Dining & Bed Rooms.

DOORS:

Teak veneered Flush type main door & other doors factory made flush type in enamel paint. Sal wood frames. Hardware & fittings in stainless steel.

WINDOWS : Aluminum Glazed Window.

KITCHEN:

Wall: Ceramic Tiles 3' above working platform

Flooring : Anti Skid Ceramic Floor tiles.

Fittings : Granite working platform with stainless steel sink.



SAI KRISHNA RESIDENCY

TOILETS:

Wall: Designer Ceramic Tiles up to 6' height

Flooring : Anti Skid Ceramic tiles.

Fittings : Wash basin, WC/Commode of reputed mark & all taps and fittings with designer C.P. of reputed make.

Wall Finish : POP punning to interior wall & cement paint to exterior walls.

Payment Schedule:

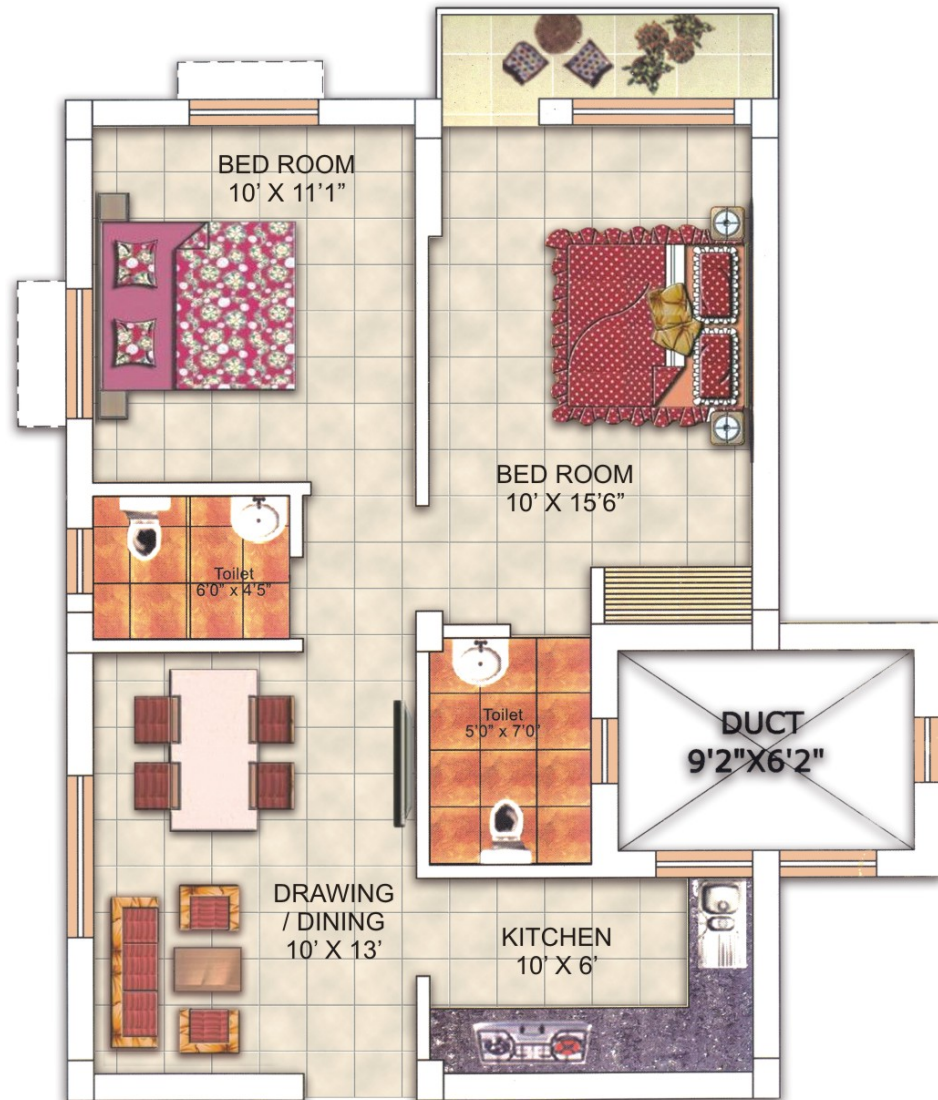
1. Initial Booking Amount	:	15%
2. Upon execution of Agreement	:	10%
3. After Completion of Foundation	:	25%
4. After Completion of Roof Slab of respective Floor	:	15%
5. After Completion of Brick work of respective Flat	:	15%
6. After Completion of Plastering of respective Flat	:	10%
7. After Completion of Flooring of respective Flat	:	5%
8. On or before Possession	:	5%

1 BHK FLAT



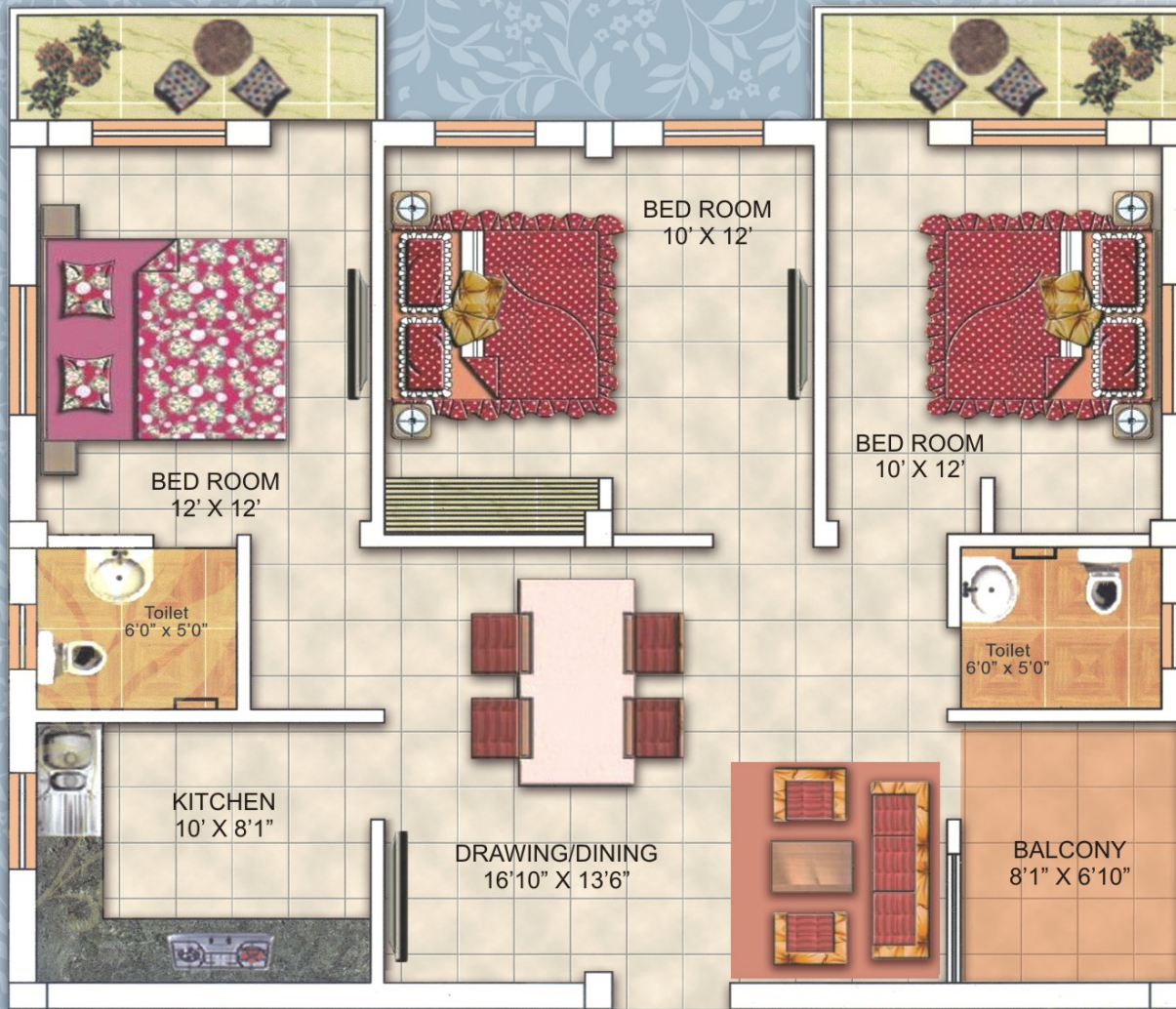
1 BED ROOM FLAT
S.B.AREA: 698 sq.ft.

2 BHK FLAT



2 BED ROOM FLAT
S.B.AREA: 936 sq.ft.

SAI
KRISHNA
RESIDENCY



Approved by all leading
Nationalized Banks



3 BED ROOM FLAT
S.B.AREA: 1451sq.ft.



Bird eye View of the Project



Project Situated Near CV Raman College, Bhubaneswar

| 1 BHK | 2 BHK | 3 BHK | Available



Sai Krishna Homes Pvt. Ltd.

Ratha Road, Old Town, Bhubaneswar-751002, Mob. 8280116083
skpc1117@gmail.com, www.safalconstructions.com

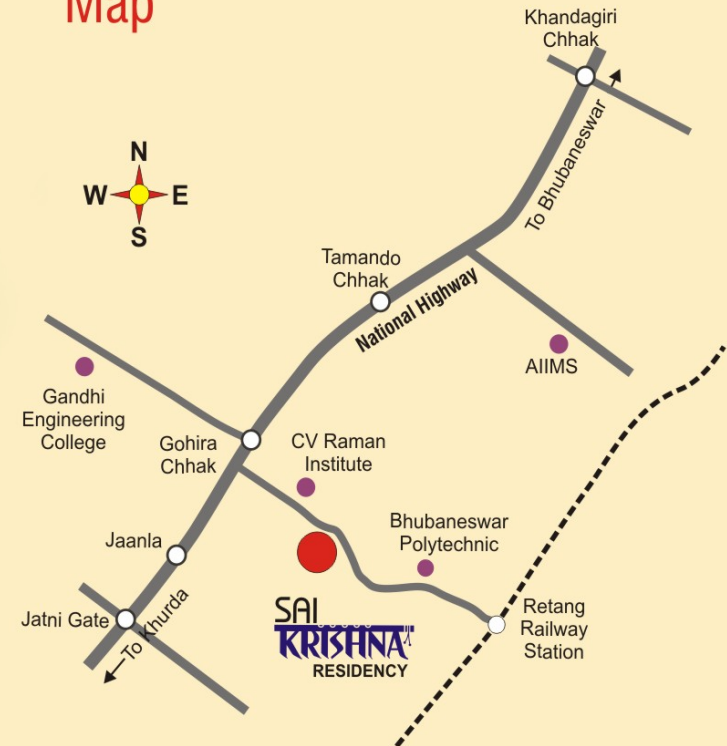
PC Plaza, Bomikhal, Cuttack Road, Bhubaneswar-751010

Architect: **Ar. A. K. Muduli**

ARCHITECTS POINT, A-151, (1st Floor), Saheed Nagar, Bhubaneswar - 751007

The brochure is not a legal document. It has been produced for the general promotion of the development and for no other purpose. All information contained in this brochure is taken from design intent material and may be subject to further design development. These details do not form any part of any contract and whilst every effort has been made to ensure their accuracy, this cannot be guaranteed and intending purchasers should not rely on them as statements or representation of facts.

Location Map



To Know:

- 2.5 km. from AIIMS, Bhubaneswar
- 2 km. from Retang Railway Station
- 2.5 km. from National Highway
- 4 km. from proposed New Bhubaneswar Bus Stand
- 15 min. away from Biju Pattanaik International Air Port
- 10 min. away from Infocity – II (Asia's Biggest IT City)
- All leading educational hubs near the project